

## STOLEN VEHICLE RECOVERY - CELLSTOP SVR 300

The CellStop SVR 300 System is the most advanced automotive tracking, security and personal management device currently in the market. CellStop has developed a product that not only provides the security aspects required by the customer, but also enables the customer to actively control their vehicle and draw informative information about its health and use. The triad of communications between User, Vehicle and Control Centre is unique in the market.

Traditionally vehicle tracking systems only communicate with a central server. CellStop has developed a friendly and secure system allowing the user direct access to useful information from the vehicle. One of the key advantages of this is that by bringing the user into the operational loop, the integrity of the system is maintained (the user is aggrieved when they cannot find their car) ensuring a higher rate of recovery.

The hardware solution currently in the market is CellStop's 5th commercial generation derivative of our successful tracking and security product range. The products have proven highly successful and are operating in Africa, Middle East, Asia and North America. CellStop has sold over 6,500 units of its systems worldwide.

### WRU (Where aRe you)

Via an SMS it is possible to request a co-ordinate position of your vehicle which would be delivered to your cellphone via SMS. The response will give a street address and distance to other points of interest, together with the status of the vehicle, ie travelling at 45km/h, ignition on.

CA 377 838  
Upper Orange Street  
800m Holiday Inn  
Cape Town  
South Africa  
Ignition Off



### STATUS

An authorised user can request information about the health of the unit and the vehicle via an SMS. An SMS is delivered back to the users cellphone with a detailed report on the status of the vehicle. This allows the user to confirm the functionality of their unit at all times.

A5.2.03r5	Software version no.
Battery OK	Confirmation that vehicle battery is good
12.0v	Actual voltage of vehicle battery
GPS Locked	Confirms GPS is locked to satellites**
Odo 57332km	Odometer of vehicle***
Ignition Off	Ignition status on ON or OFF
Trip 22km	Distance travelled in last trip
Speed 60k N	Speed and direction vehicle is travelling
07h50 14/07/04	Time (note this is GMT) and date
E028 04 22	Longitude
S26 04 32	Latitude



### STANDARD FEATURES

- WRU (Where aRe yoU)
- VRU
- Status (Vehicle and System Health Check)
- Panic Button
- Battery Low
- Battery Disconnect
- Hijack Alarm
- Heart Beat
- Satellite Tracking via GPS
- GSM Communication
- Real Time Location
- Authorised user system with PIN code protection

### ALARMS (Monitored by Control Centre)

- Battery Disconnect
- Hijack Alarm
- Panic Alarm

### Included in Monthly Service Fee

- 20 x Free WRU's and 15 x Free VRU's
- 50 x Free SMS's
- 24/7 Call Centre Hotline
- 24/7 Alarm Monitoring
- 24/7 Recovery within the borders of SA
- Daily Health Check

## THE SVR CONTROL CENTRE SOFTWARE SOLUTION

The Control Centre Solution is designed to equip the monitoring and recovery teams with the most sophisticated system providing all the tools necessary to effect a successful recovery. The architecture of the system enables the monitoring and recovery centres to be separated and still provide full and secure access to the vehicles to allow real up to the second monitoring whilst a hijack is in progress.

The Control Centre staff consists of well trained and experienced Control Centre Operators, Dedicated Supervisors and Top Class Management. All of the Control Centre Staff are available to the CellStop customers on a 24/7 basis in case of any Emergency.

The Control Centre will monitor the following Alarms:

### Battery Disconnect Alarm

Immediate notification is communicated on the disconnection of the main battery of the vehicle.

### Panic Alarm

An alarm is sent immediately once the panic button in the vehicle is pressed.

### Hijack Alarm

A hijack alarm can be sent from any cellphone to the vehicle, by sending an SMS - "hijack, pin" and the Control Centre will receive the alarm.

When any of the above alarms are received, the Control Centre will validate such alarms and respond simultaneously. All the alarms are considered to be an emergency and are dealt with accordingly.

The Control Centre in conjunction with the Technical department of CellStop will also monitor the following:

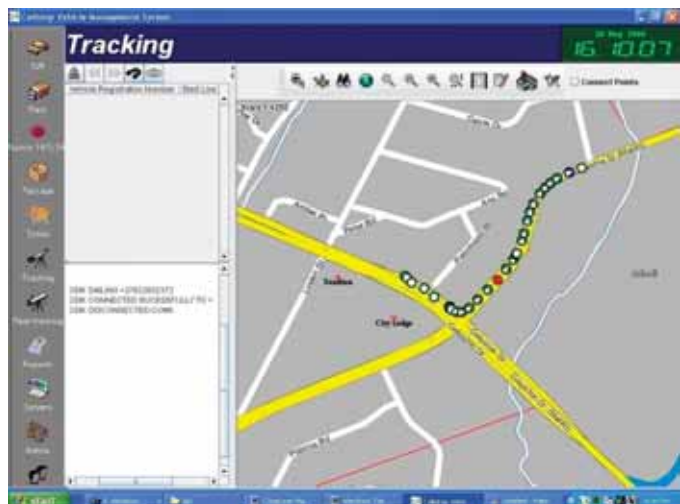
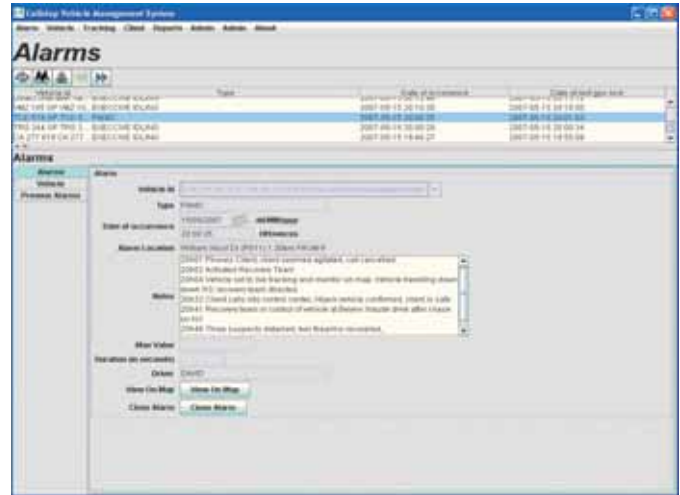
### Heart Beat - Unit Health Check

The unit reports into the Control Centre daily to confirm its functionality. The server raises an alarm if the unit does not report in at its designated time. Should this happen the Technical Department will be informed so as to deal with the matter immediately.

The highly qualified and experienced recovery field agents and the recovery response teams are available 24/7 to attend to any emergency within the borders of South Africa. Air Support is available in the major cities throughout South Africa. Senior Management with exemplary testimonies are accountable for the recoveries and recovery network.

### Live Tracking of Vehicles

The map (bottom right) shows a live track of a vehicle being recovered. The arrows in the circles indicate the direction of travel. The red dot indicates the panic alarm.



Preferred Network Service Provider

**EMERGENCIES:**



Recovery Control Centre: 0861 011 911

**CALL CENTRE:**

Help Desk: 08600 CSTOP Fax: 08600 CSFAX